

Operational Technology

Information Technology



Ecostruxure IT 施耐德智慧管理系統解決方案

Cloud Base Solution



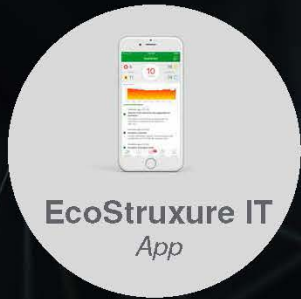
Billy Chu
Solution Consultant
Secure Power

Life Is On

Schneider
Electric

EcoStruxure IT 軟體及服務

雲端版



EcoStruxure IT App



EcoStruxure Asset Advisor
Schneider's Remote Monitoring Service



EcoStruxure IT Advisor
IT Infrastructure Planning and Modeling



EcoStruxure IT Expert
IT Infrastructure Monitoring with Insights



SmartConnect
Smart-UPS Monitoring



EcoStruxure IT Software Free version
Basic IT Infrastructure Monitoring

在地化



NetBotz
Security and Environmental Monitoring for Edge and Data Center Environments

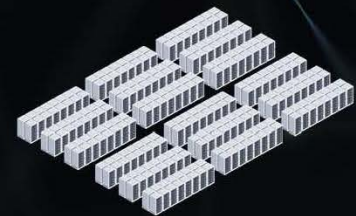
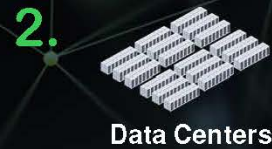


StruxureWare Data Center Expert
IT Infrastructure Monitoring



EcoStruxure IT Advisor on Premise (Data Center Operation)
Planning and Modeling

市場



優勢

- Benchmarking / analytics
- Easy upgrades
- OpEx
- Cybersecurity
- Limitless scale

- Regulatory compliance
- CapEx

Life Is On



EcoStruxure™ IT

Innovation At Every Level



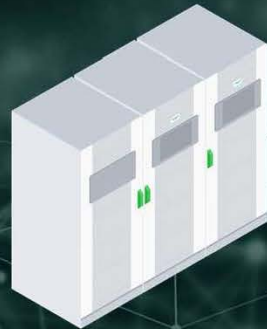
EcoStruxure IT simplifies the way data center, distributed IT, and local edge environments are operated and serviced.

EcoStruxure IT

在地化佈署

StruxureWare
Data Center Expert

EcoStruxure IT Advisor
(On Premise)



EcoStruxure IT

雲端基礎

EcoStruxure IT
Expert

EcoStruxure IT
Advisor

EcoStruxure Asset Advisor

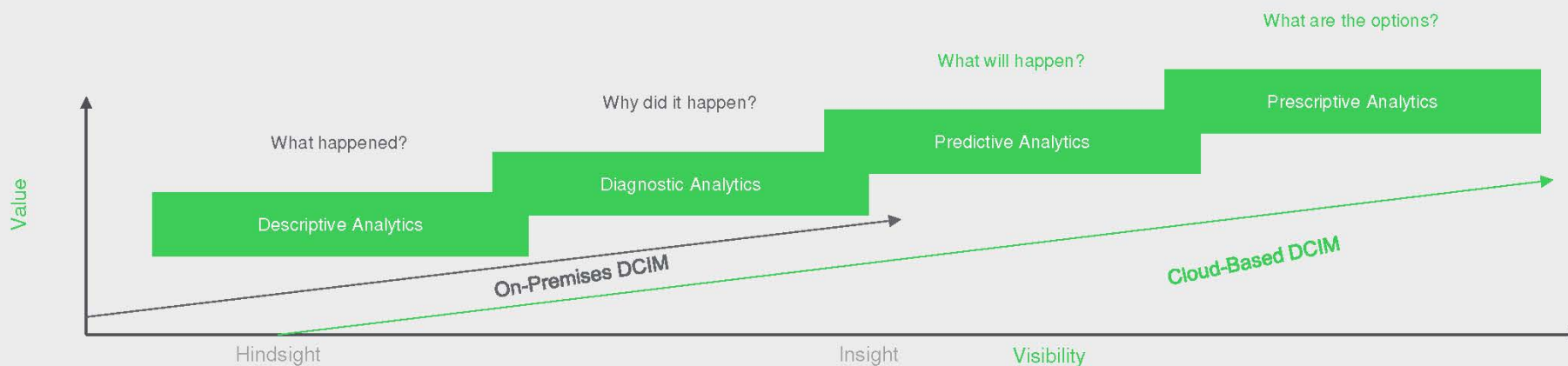
EcoStruxure IT Expert – Mobile Insights



EcoStruxure
IT for Partners



雲端解決方案的好處



部署快速、
簡單

隨時隨地自由
存取

預測分析

零維護成本

隨時更新資訊
安全

軟體自動更新
及備份

EcoStruxure IT Expert

幫助IT專業人員簡單且輕鬆管理他們的設備，IT Expertg將收集到的數據及告警狀態做資料整理並分析，提供設備健康狀況，同時也確保資安防護，在任何時刻都能做設備可視化。

任何地點, 任何時間, 查看任何設備。



透過電腦或是行動裝置及時查看資料中心狀態，並能夠客製化儀表板。



透過數據基準化與評估來優化設備管理。
包含透過設備資安風險評估來降低風險

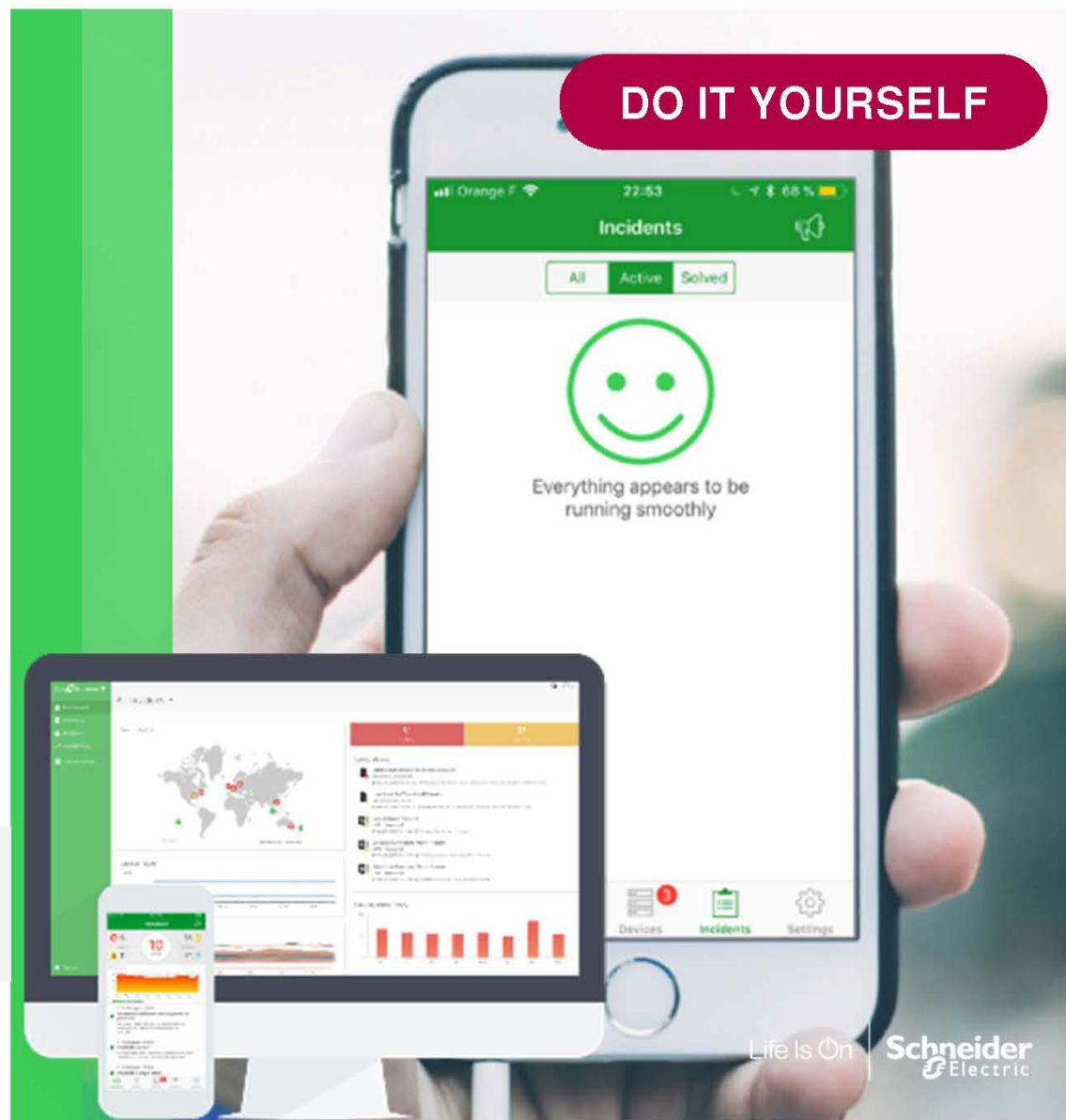


針對遠端設備管理，可做批量配置以及批量韌體升級。



透過建議事項採取對設備做預防維護及快速故障排除。

<https://ecostruxureit.com/ecostruxure-it-expert/>



UPS 分數評估

The score represents the overall health of a UPS device. Keep the score high for optimize maintenance and extend the life of the device. You have 8 devices with a low score.

FILTERS

Score

- Incomplete
- Poor
- Average
- Good

Recommendations

- Lower temperature
- Replace battery
- Replace device
- Balance the phases

Ups age

Battery age

Device ID	Model	Location	UPS age	Battery age	Score
apc83889A	Symmetra RM 6000 - QD1137260366 - 10.169.113.211	Demo Center	7.7 Y	7.7 Y	14
Symmetra PX 160	Symmetra 160K - PD0820160080 - 192.168.1.162	SETC	11.0 Y	11.0 Y	15
UPS - Calgary Data Center	Smart-UPS 750 - Q50503141402 - 10.169.104.124	Calgary Data Center	14.3 Y	5.3 Y	16
ups-d-1	Symmetra 160K - PD1046160118 - 192.168.1.243	D	8.5 Y	8.5 Y	16
SURT3000XL	Smart-UPS RT 3000 XL - N50739008247 - 10.216.132.66	MB Demo Room	11.6 Y	7.0 Y	20
SELA 20KVA	Smart-UPS VT 20 kVA - PS1015341033 - 10.184.20.29	HubAsia	5.7 Y	5.1 Y	25
apc616748					27

Eco-truxure IT

< Back to Assessment
Symmetra PX 160 >
Symmetra 160K - PD0820160080 - 192.168.1.162
SETC

Score details
May 7, 2019

15 / 100

This score is a calculation based on several factors that influence the lifespan of UPS devices.
Keeping the score high can extend the lifespan of the UPS.
The UPS has a low score. To improve the score, follow the tips below.

The score is based on:

UPS age	11.0 Y
Improve score by: Replacing the UPS	
Battery age	11.0 Y
Improve score by: Replacing the battery	
Battery temperature	37.3 °C

Significant changes in data
May 7, 2019

Significant changes over time that have influenced the score.

- May 4, 2019
 - Battery temperature changed by -0.6 °C
- Mar 12, 2019
 - Battery temperature changed by 0.68 °C

Alarms
May 7, 2019

Power Modules Now Detected - Power modules are now detected.

First activated	Last cleared	Activated	Total activated for
Apr 3, 2019	Apr 3, 2019	1 time	6 minutes

System Mode Alarm Cleared - System Mode Alarm : Atypical Bypass Mode Cleared

First activated	Last cleared	Activated	Total activated for
Apr 3, 2019	Apr 3, 2019	1 time	6 minutes

No Longer In Bypass - No longer in bypass.

First activated	Last cleared	Activated	Total activated for
Apr 3, 2019	Apr 3, 2019	1 time	6 minutes

Local Management-To-UPS Communication Restored - Restored the local network management interface-to-UPS communication.

First activated	Last cleared	Activated	Total activated for
Apr 3, 2019	Apr 3, 2019	1 time	6 minutes

Output Power Now Turned On - The output power is now turned on.

First activated	Last cleared	Activated	Total activated for
Apr 3, 2019	Apr 3, 2019	1 time	6 minutes

Returned From Forced bypass - No longer in forced bypass.

First activated	Last cleared	Activated	Total activated for
Apr 3, 2019	Apr 3, 2019	1 time	16 minutes

Battery Monitor Card Inserted - The battery monitor card was inserted.

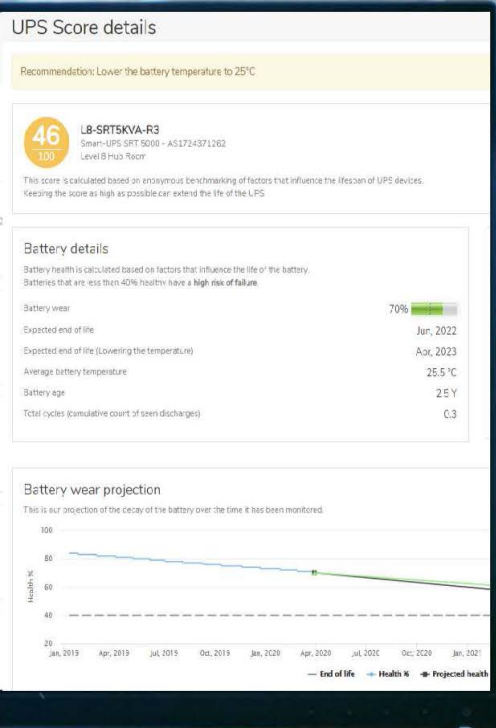
First activated	Last cleared	Activated	Total activated for

[Support](#)

總結 / 觀察

- 設備及電池過於老舊，存在高風險。
- 電池溫度過高。

UPS電池老化狀況評估



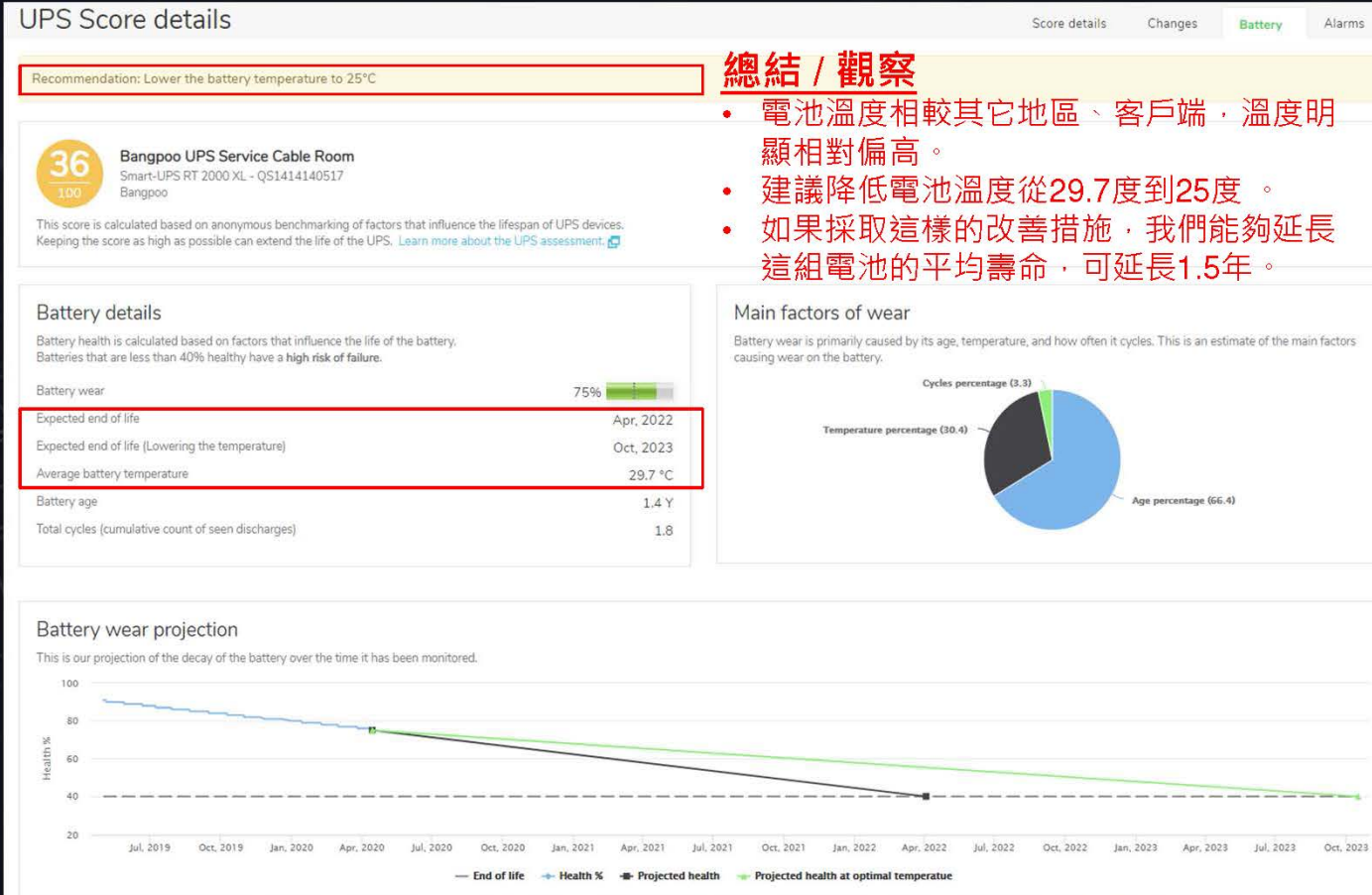
新增在UPS評估報告中，針對電池老化狀況提供細部分析，目前針對單相 Smart-UPS，其它機種陸續增加中..

檢視目前效能比較差的電池，也能檢視生命週期即將到期的電池，如果電池溫度不是在最理想狀況，系統將提供最理想電池建議溫度。

主要檢視影響電池老化三個重要因子:1.溫度 2.年齡 3.電池放電次數。

檢視電池衰減程度曲線圖，同時呈現當前及最佳況狀態供使用者作比較。

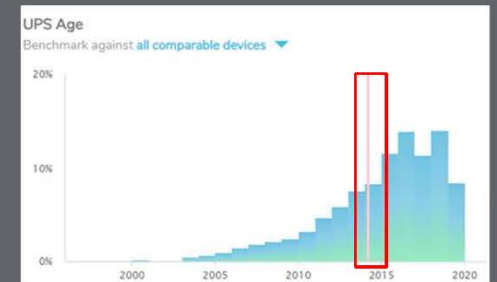
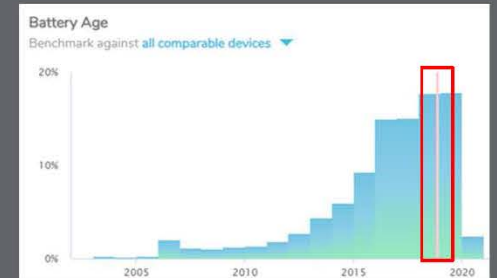
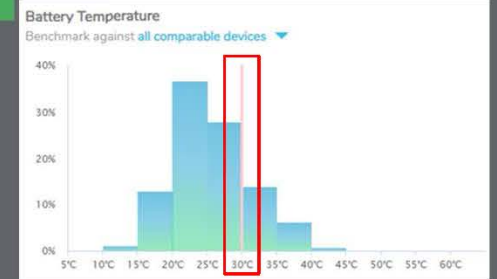
電池效能評估



總結 / 觀察

- 電池溫度相較其它地區、客戶端，溫度明顯相對偏高。
- 建議降低電池溫度從29.7度到25度。
- 如果採取這樣的改善措施，我們能夠延長這組電池的平均壽命，可延長1.5年。

數據基準化



設備資安評估

Eco-truxure IT

儀表板

庫存

警示

評估

管理

報告中

管理

說明中心

裝置安全性評估

[返回評估頁面](#)

總結 / 觀察

- 設備韌體過於老舊，存在安全性漏洞風險。
- 如果採取相關的改善措施，能夠確保這些設備遭受攻擊。

列印

概覽

此評估表示目前在所發現裝置上偵測到的裝置安全性漏洞。

查看預期之外的結果嗎？ [瞭解詳細資訊](#)

9 裝置不符合安全性標準

7 具有易受攻擊的設定之裝置

當偵測到易受攻擊的裝置設定時，建議進行設定。

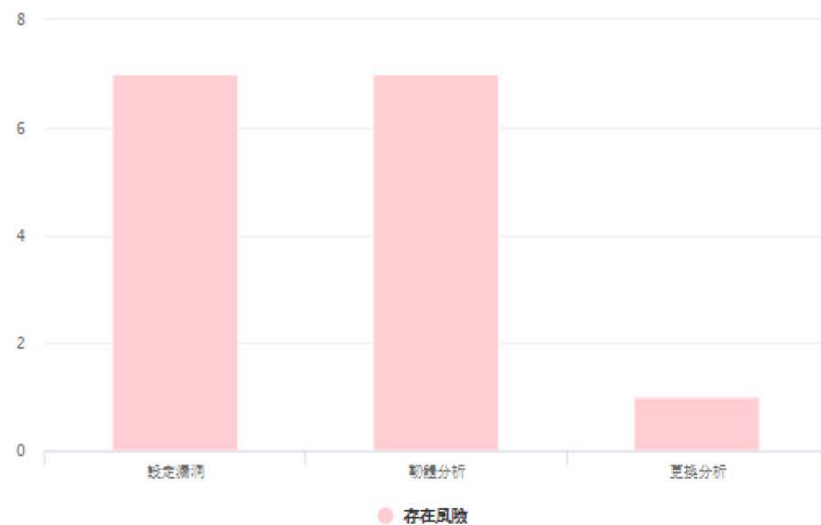
7 具有過時韌體的裝置

當 Schneider Electric 能夠找到包含安全性修復程式的新韌體時，建議更新韌體。

1 應更換裝置

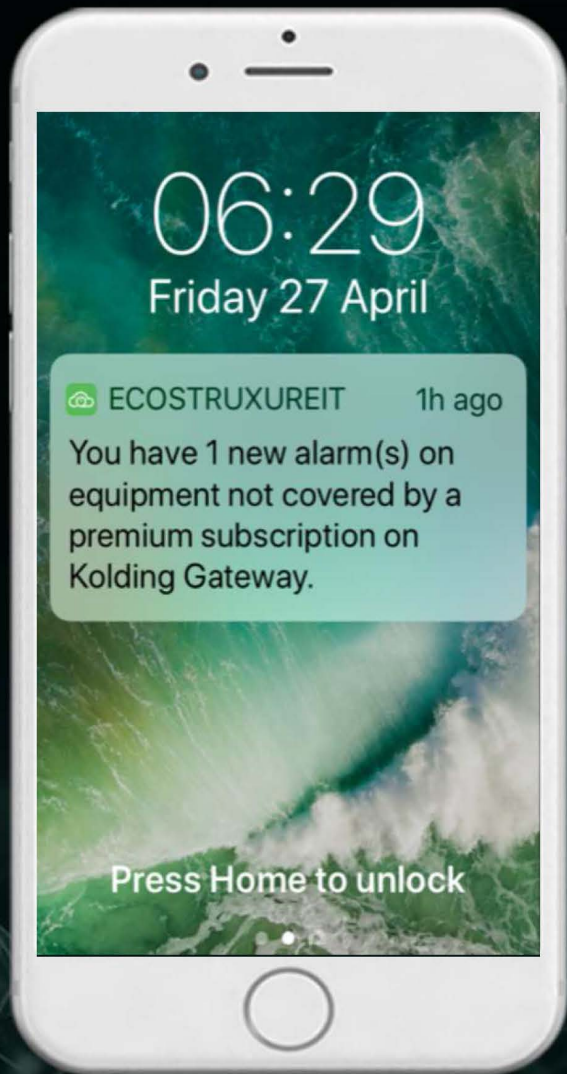
當由於裝置硬體限制或製造商不再支援裝置而無法解決安全性問題時，建議更換裝置。

未分析部分裝置。 [瞭解詳細資訊](#)

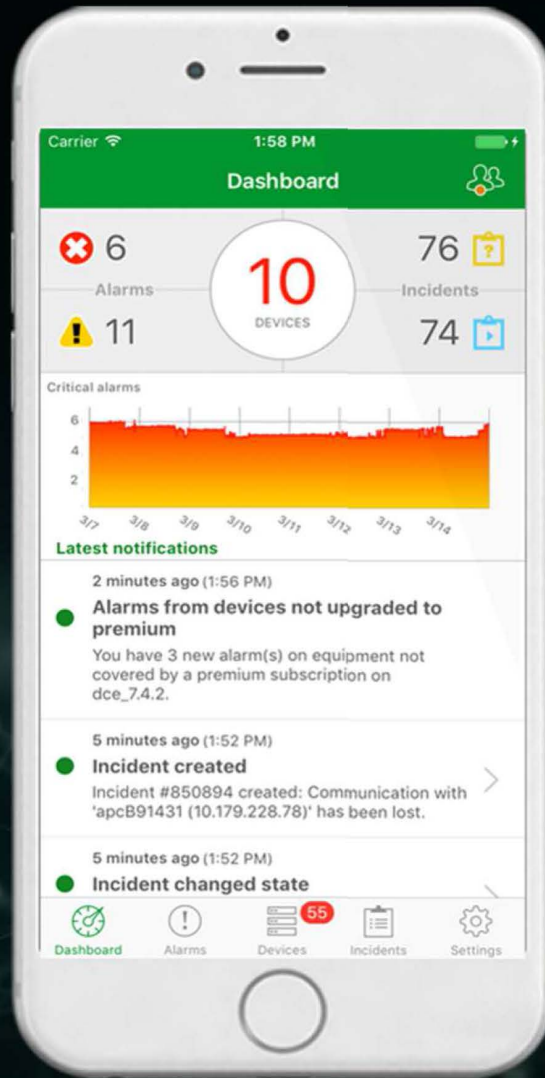


韌體分析

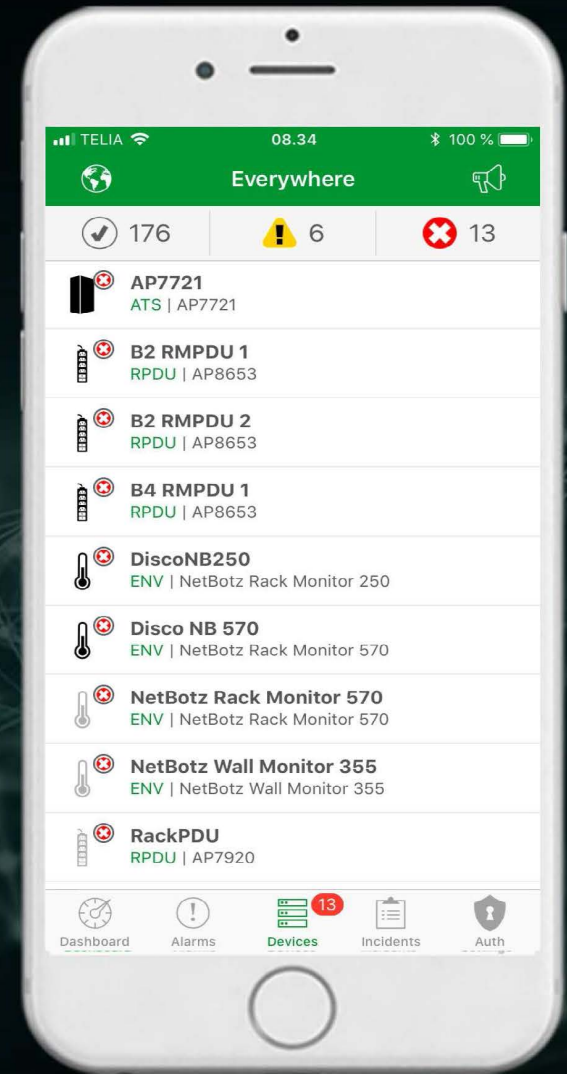
7 裝置不符合安全性標準



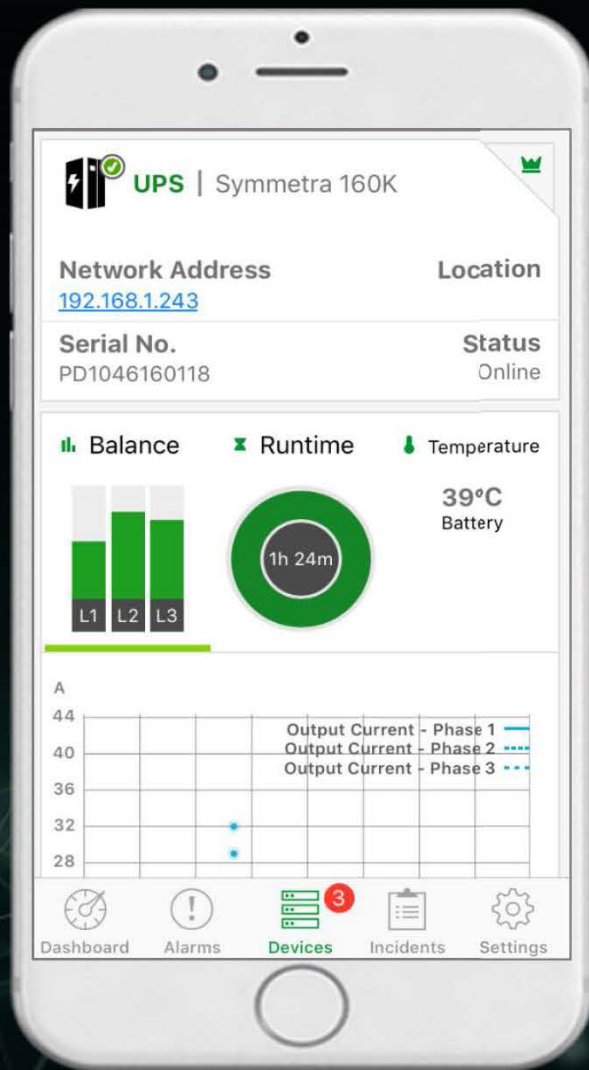
警報自動推播



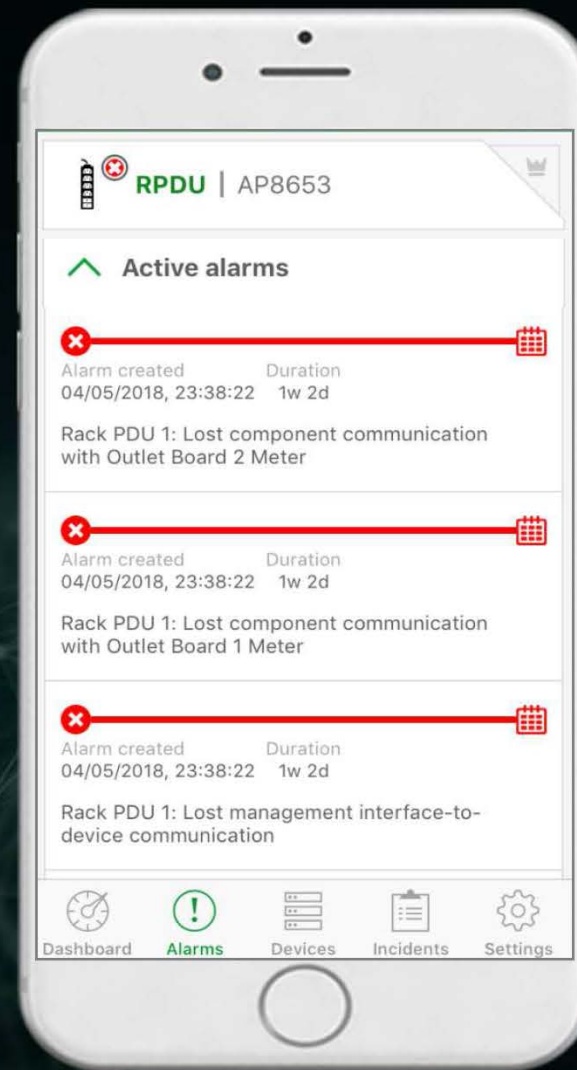
APP主頁總覽



設備清單列表



個別設備資訊



設備警報資訊

Life Is On

Schneider
Electric